

ICE/ECE - INTERIOR/EXTERIOR CORNER EXTENDER

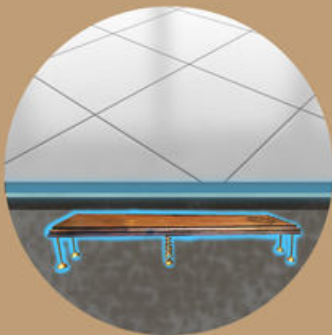
GEOPATHIC REVERSALS



ICE - Interior Corner Extender

ECE - Exterior Corner Extender

The corner extending devices are used in interiors as well as exteriors for cut zones and areas where we cannot use cosmic symbols & make an energy/ vastu boundary.



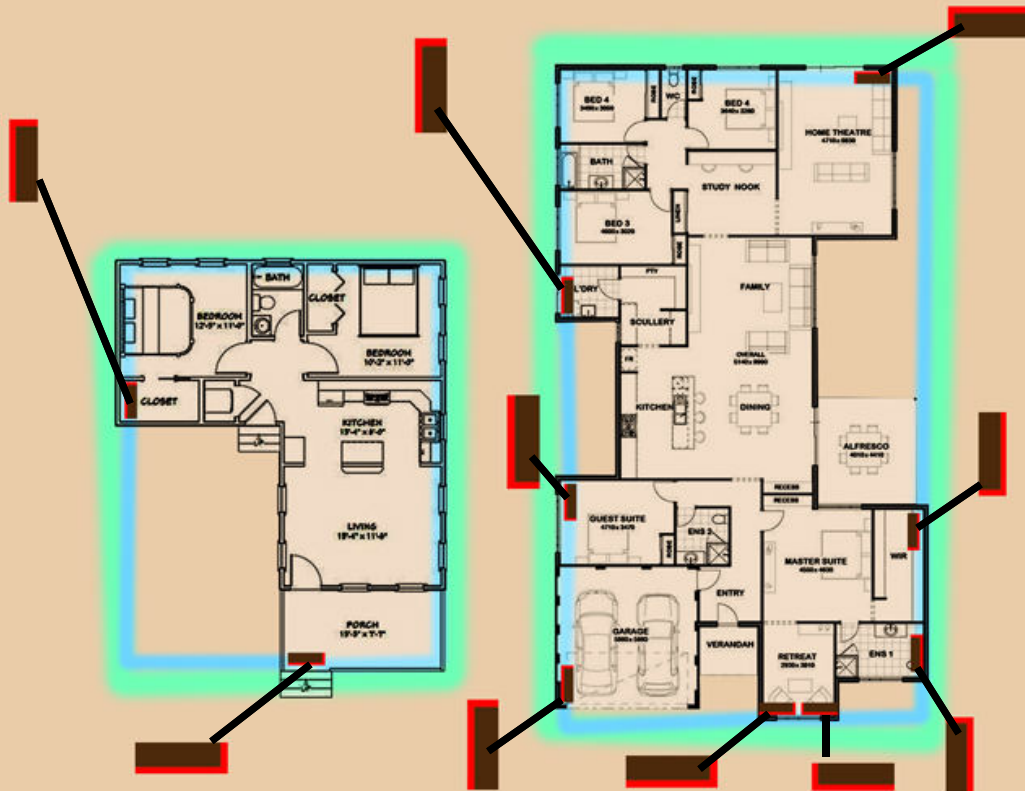
Used in pairs only



High Intensity
(Range upto 100 feet)



In order to repel negative influences or to virtually correct the plot according to vastu: The ICE can be fully inserted below ground or inserted half inside the floor; The ECE is fully inserted below ground.



Note: The corner extenders must not be used individually and are supposed to be used in pairs only in order to complete the energy loop.



Note: Detailed description regarding the product and installation is given in the manual

For more information contact - +91 9822573102, www.vastuworld.com