

VASTUWORLD GEOPATHIC REVERSER - VGR

EXTERIOR GEOPATHIC REVERSAL



- The Vastuworld Geopathic Reverser (VGR) has a special system to reject and redirect Geopathic stress lines.

- It resonates earth based negative energies and has a range up to 5 acres of the plot area.

- The base plate has cosmic symbols on it and positive energy is transferred from here to the ground.

- The Geopathic energies enter through the hole and take 17 rounds along with this copper spiral and are converted into positive energy and then reaches the base plate.

- This product can be very effectively used for death and entity element.

- The introduction of strong micro crystals and other bio-forms has made this product much superior to control geopathic stress of any strength and amplification.

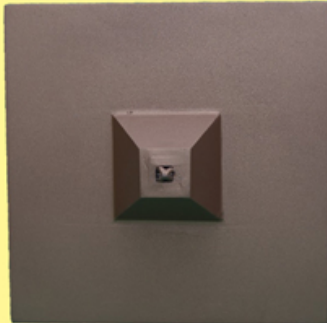


VASTUWORLD GEOPATHIC REVERSER - VGR

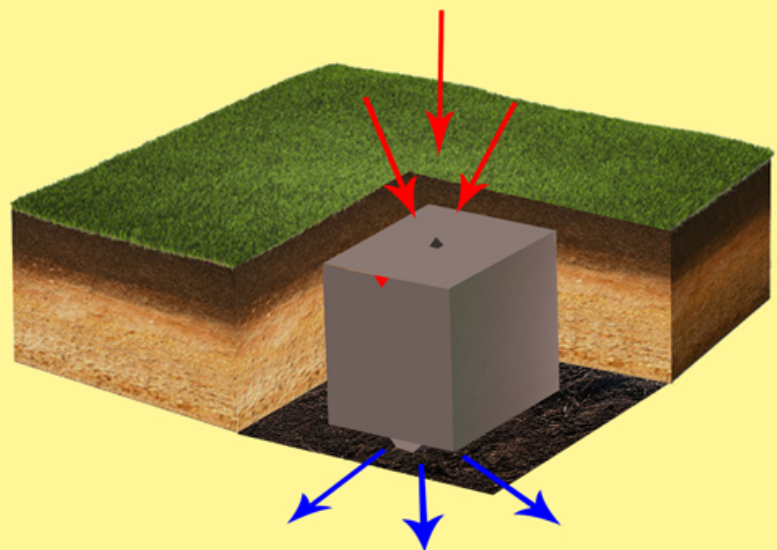
Size: 9 in x 9 in x 1.5 ft

Pit Size: 2 ft x 2 ft x 2 ft

The **red mark** on the VGR shows the direction in which it should face to counter the incoming geostresses.

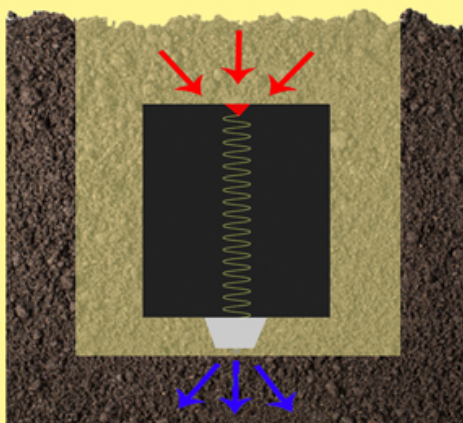


Bottom View of VGR



The Geopathic stresses present in the atmosphere enters the Geopathic reverser which has a special system to reject the energies and spread positive healthy energies.

It has a strength to intrude on negative vibrations till 15000 sqm or 3 acres to 5 acres.



Section showing flow of energy in the ground

Note: Detailed description regarding the product and installation is given in the manual

For more information contact - +91 9822573102, www.vastuworld.com